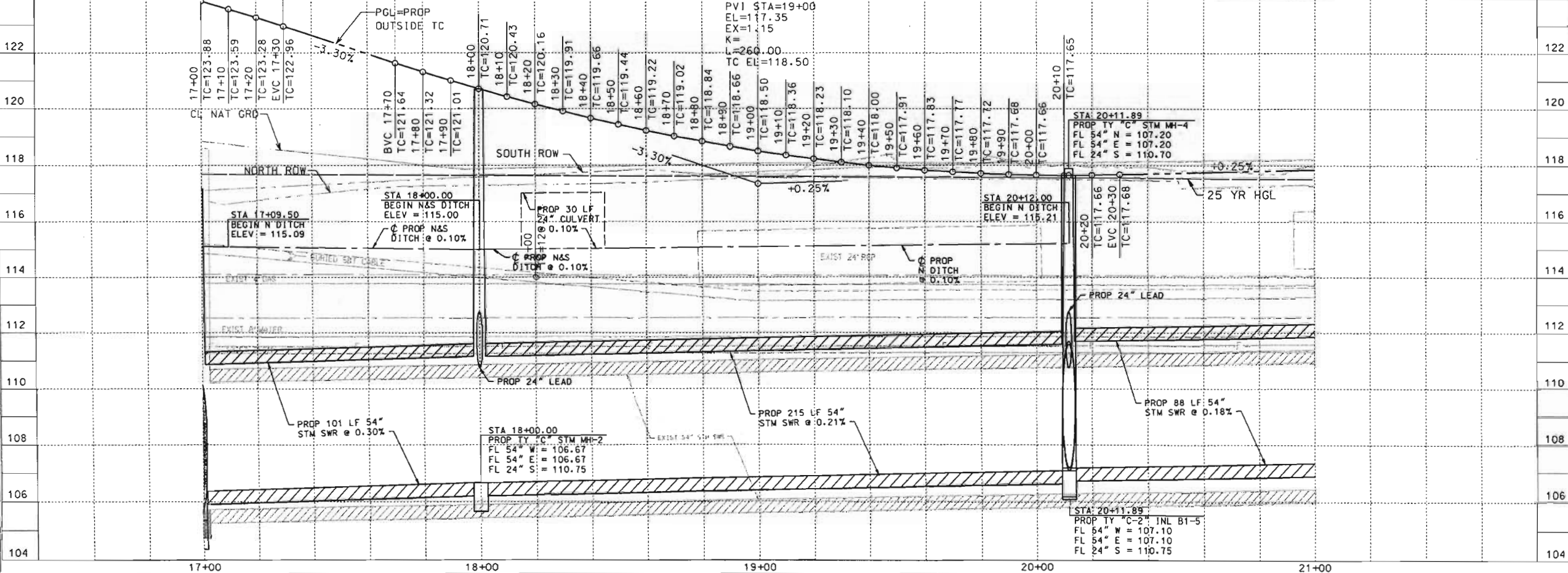


STATION	OFFSET
20+59.33	16.00 LT
20+59.33	16.00 RT



BENCHMARKS:
 NGS MONUMENT "0607" LOCATED ON STATE HIGHWAY 249 JUST NORTH OF BELTWAY 8.
 ELEVATION = 118.625 (NGVD 1929, 1973 ADJUSTMENT)

STANDARD PROFILE LEGEND


EXIST. P.W.M.T.
 RIGHT OF WAY N. & E.
 RIGHT OF WAY S. & W.
 TOP CURB OR C. DITCH N. & E.
 TOP CURB OR C. DITCH S. & W.

CAUTION: UNDERGROUND GAS FACILITIES
 LOCATIONS OF CENTERPOINT ENERGY MAIN LINES TO INCLUDE CENTERPOINT ENERGY INTERSTATE PIPELINES, INC. WHERE APPLICABLE ARE SHOWN IN AN APPROXIMATE LOCATION ONLY. SERVICE LINES ARE USUALLY NOT SHOWN. OUR SIGNATURE ON THESE PLANS ONLY INDICATES THAT OUR FACILITIES ARE SHOWN IN APPROXIMATE LOCATION. IT DOES NOT IMPLY THAT A CONDUIT ANALYSIS HAS BEEN MADE. THE CONTRACTOR SHALL CONTACT THE UTILITY COORDINATING COMMITTEE AT (713) 223-4567 OR 1-800-669-8314 A MINIMUM OF 48 HOURS PRIOR TO CONSTRUCTION TO HAVE MAIN AND SERVICE LINES FIELD LOCATED.

WARNING: OVERHEAD ELECTRICAL FACILITIES
 OVERHEAD LINES MAY EXIST ON THE PROPERTY. WE HAVE NOT ATTEMPTED TO MARK THOSE LINES SINCE THEY ARE CLEARLY VISIBLE, BUT YOU SHOULD LOCATE THEM PRIOR TO BEGINNING ANY CONSTRUCTION. TEXAS LAW, SECTION 752, HEALTH AND SAFETY CODE, FORBIDS ALL ACTIVITIES IN WHICH PERSONS OR THINGS MAY COME WITHIN SIX (6) FEET OF LIVE OVERHEAD HIGH VOLTAGE LINES. PARTIES RESPONSIBLE FOR THE WORK, INCLUDING CONTRACTORS, ARE LEGALLY RESPONSIBLE FOR THE SAFETY OF CONSTRUCTION WORKERS UNDER THIS LAW. THIS LAW CARRIES BOTH CRIMINAL AND CIVIL LIABILITY. TO ARRANGE FOR LINES TO BE TURNED OFF OR REMOVED CALL CENTERPOINT ENERGY AT 713-207-2222.

NOTE:
 THE LOCATION OF SBC UTILITIES ARE SHOWN IN AN APPROXIMATE WAY ONLY. THE CONTRACTOR SHALL DETERMINE THE EXACT LOCATION BEFORE COMMENCING WORK. HE AGREES TO BE FULLY RESPONSIBLE FOR ANY AND ALL DAMAGES WHICH MIGHT BE OCCASIONED BY HIS FAILURE TO EXACTLY LOCATE AND PRESERVE THESE UNDERGROUND UTILITIES.

NOTICE:
 AT LEAST 48 HOURS BEFORE EXCAVATING IN STREET ROW OR EASEMENTS CALL UTILITY COORDINATING COMMITTEE. (713) 223-4567

PREPARED FOR THE

 PUBLIC INFRASTRUCTURE DEPT
 ARCHITECTURE & ENGINEERING DIVISION

AECOM
 AECOM USA GROUP, INC.
 5157 WOODWAY, SUITE 101 WEST HOUSTON, TEXAS 77057-1599
 WWW.AECOM.AECOM.COM
 T&E REG. NO. F-3082

I.A. PANIS-NACHMAN, P.E.
 TEXAS REGISTRATION NO. 87278
 INTERIM SUBMITTAL
 NOT FOR CONSTRUCTION PURPOSES

GREEN ROAD, SEGMENT B
 WEST GREENS ROAD
 PLAN AND PROFILE
 STA 17+00 TO STA 21+00

SHEET 5 OF 18 SHEETS

SUBMITTED BY: AECOM
 SCALE: H:1"=20' V:1"=2'
 DATE: JANUARY 2010
 SURV. BY: SURVCON
 F. B. NO.

DESIGNED BY: JAH/HBS
 DRAWN BY: DJS
 SHEET NO. 20 OF 18 SHEETS
 DWG. NO.