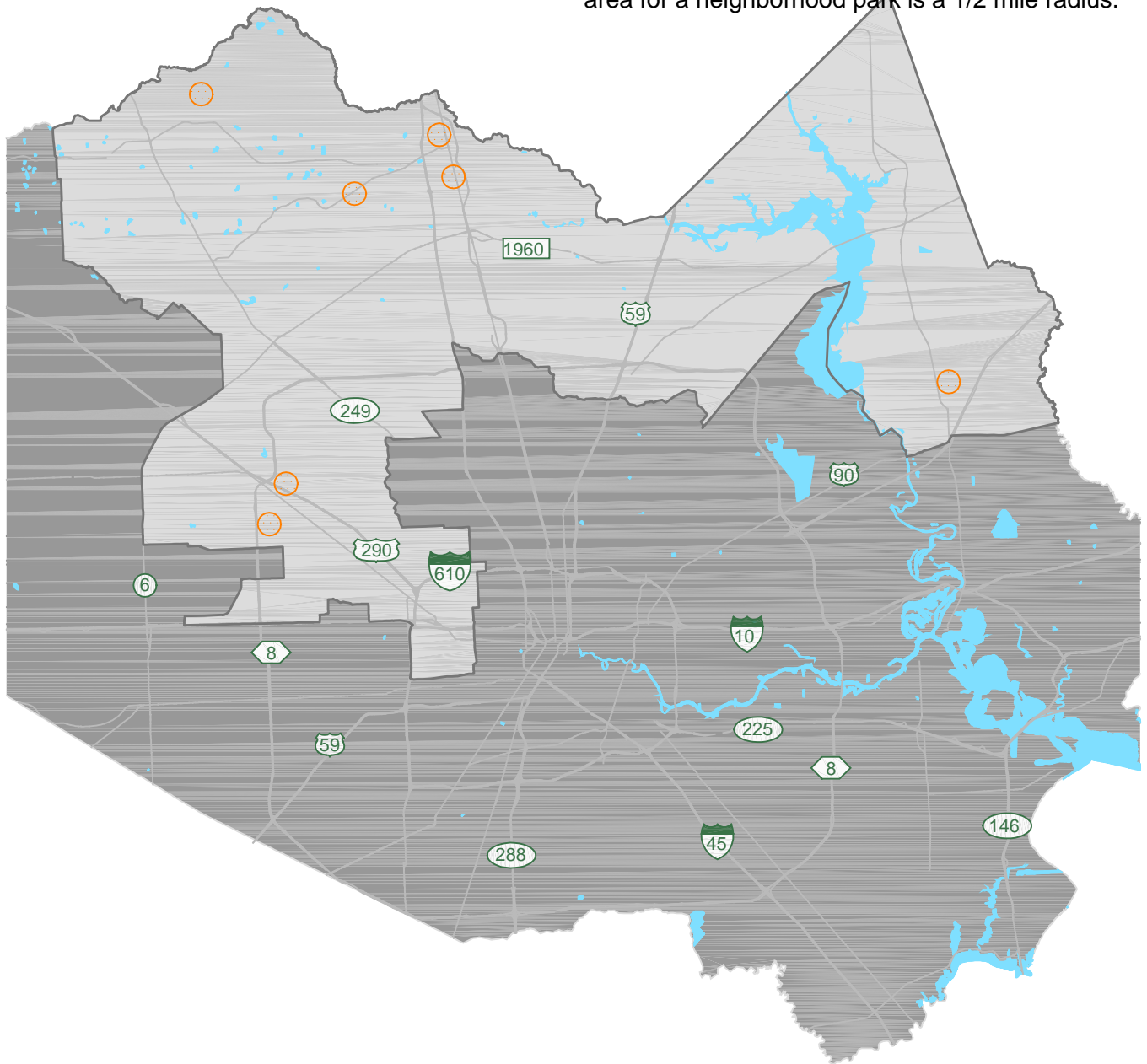


Precinct Four Mini and Neighborhood Parks

A Mini-Park has an area of 0-5 acres. The service area for a mini-park is a 1/4 mile radius. A Neighborhood Park is 5-25 acres. The service area for a neighborhood park is a 1/2 mile radius.



- Mini Park w/service area
- Neighborhood Park w/service area

