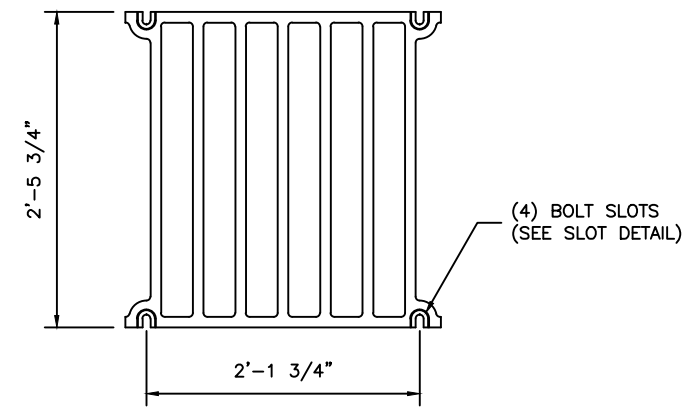
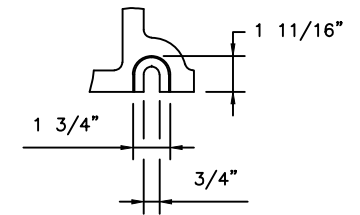


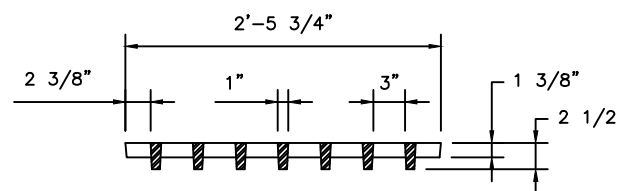
PLAN VIEW



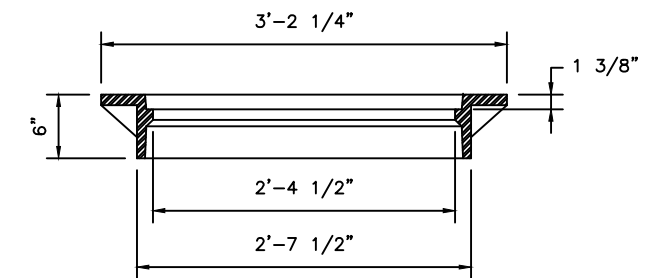
GRATE PLAN



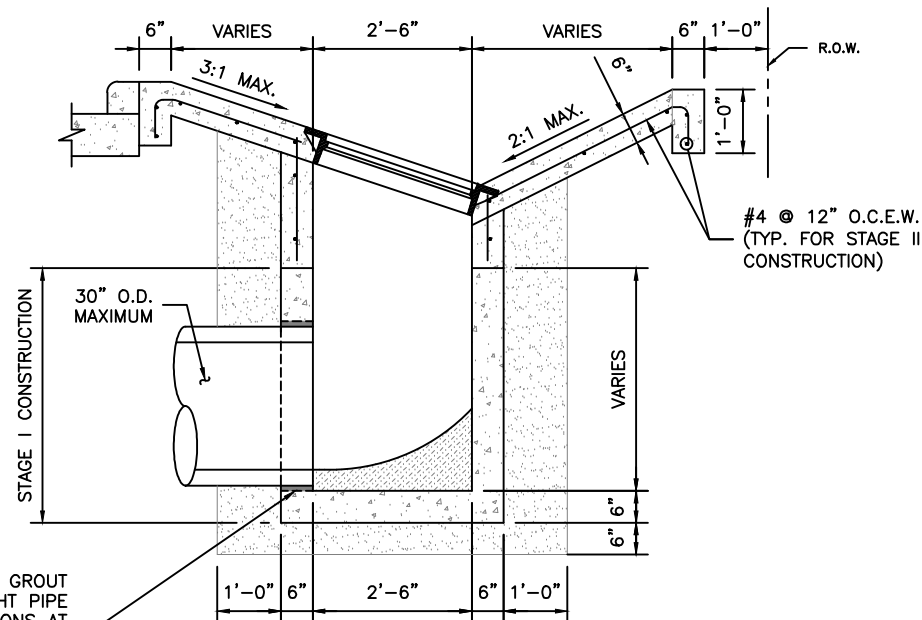
SLOT DETAIL



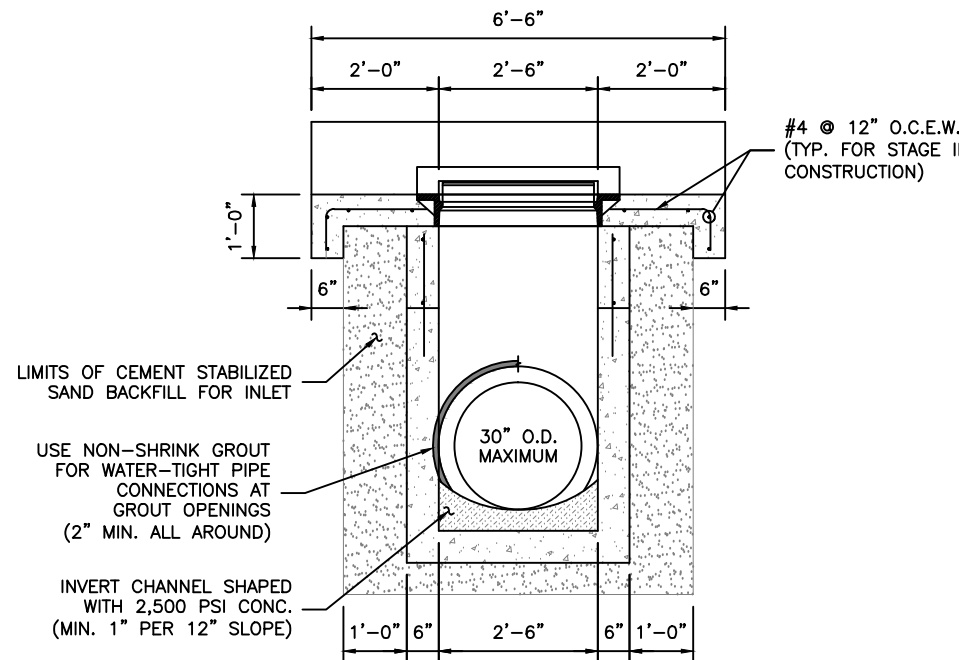
GRATE SECTION A-A



FRAME SECTION A-A



SECTION A-A



SECTION B-B

GENERAL NOTES:

1. CONSTRUCTION AND MATERIALS SHALL MEET REQUIREMENTS OF ITEM 472 "INLETS".
2. CONCRETE: MINIMUM 4,000 PSI IN 28 DAYS
3. PRECAST STRUCTURE TO MEET ASTM C913
4. FRAME AND GRATE SHALL BE EAST JORDAN IRON WORKS MODEL V-4882-3 FRAME AND V-4880-2 GRATE WITH (4) BOLT SLOT GRATE OR APPROVED EQUAL.
5. IF THE ENGINEER OF RECORD SPECIFIES A CAST-IN-PLACE INLET; HE/SHE SHALL INCORPORATE A DETAILED DRAWING INTO THE CONTRACT DOCUMENTS. HOWEVER, IF THE CONTRACTOR ELECTS TO CONSTRUCT A CAST-IN-PLACE INLET, THE CONTRACTOR WILL BE RESPONSIBLE FOR PROVIDING A DETAILED DRAWING, SIGNED AND SEALED BY A REGISTERED PROFESSIONAL ENGINEER LICENSED TO PRACTICE IN THE STATE OF TEXAS.
6. USE PRECAST UNITS FOR STAGE I CONSTRUCTION. CAST IN PLACE MAY BE REQUIRED DURING STAGE II CONSTRUCTION. SHOP DRAWINGS WILL BE REQUIRED FOR PRECAST CONSTRUCTION OF INLET.
7. KNOCK-OUTS ARE NOT PERMISSIBLE FOR PRECAST CONSTRUCTION OF INLET.
8. CONCRETE SLOPE PAVING SHALL CONFORM TO ITEM 491 "REINFORCED CONCRETE SLOPE PAVING", BUT IS INCIDENTAL TO THE INLET.
9. STAGE I OF THE INLET SHALL BE PRECAST. STAGE II SHALL BE CAST-IN-PLACE.
10. MINIMUM CLEARANCE FOR REINFORCING STEEL IN SLOPE PAVING SHALL BE TWO INCHES.

NO.	REVISIONS	DATE	NAME
1	UPDATED DEPARTMENT NAME	2/17/15	RS
2	MODIFIED NOTE 5	4/30/15	RS
3			
4			
5			

HARRIS COUNTY
ENGINEERING DEPARTMENT



CONSULTANT
LOGO/INFORMATION

FOR INTERIM REVIEW ONLY
DOCUMENT INCOMPLETE:
NOT INTENDED FOR CONSTRUCTION,
BIDDING, OR PERMIT PURPOSES
ENGINEER:
P.E. SERIAL No.
DATE:

PROJECT TITLE:		HCED STANDARD
DRAWN BY: JDZ	SHEET DESCRIPTION: MODIFIED TYPE "A" INLET DETAILS	13
CK'D BY: PDG		
SCALE: 1"=1'-6"	FOR MAXIMUM 30" O.D. PIPE	SHEET NO: /
DATE: 3/27/13		
APPROVED BY:		