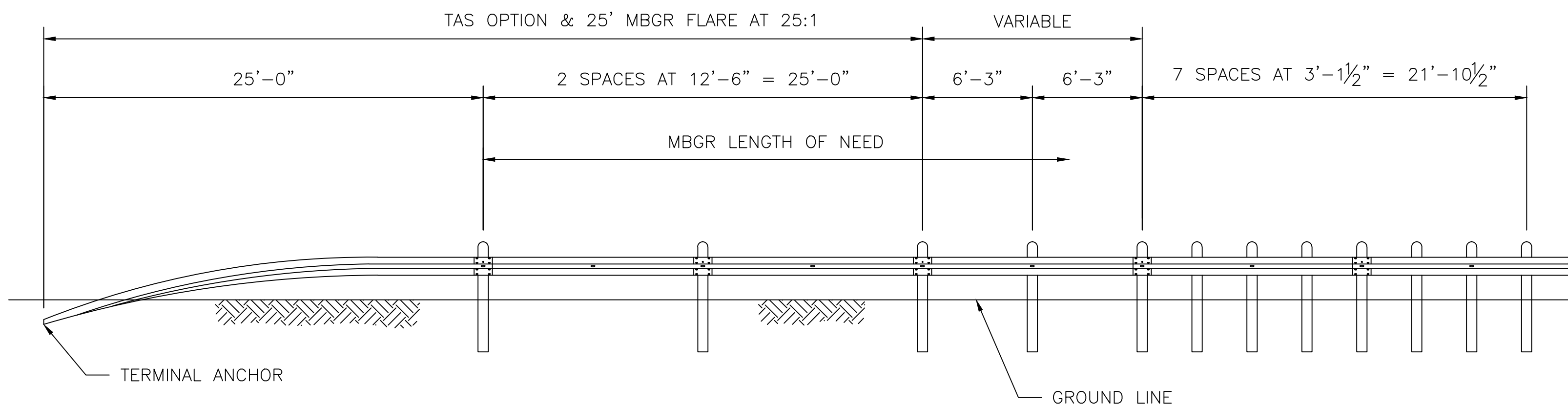
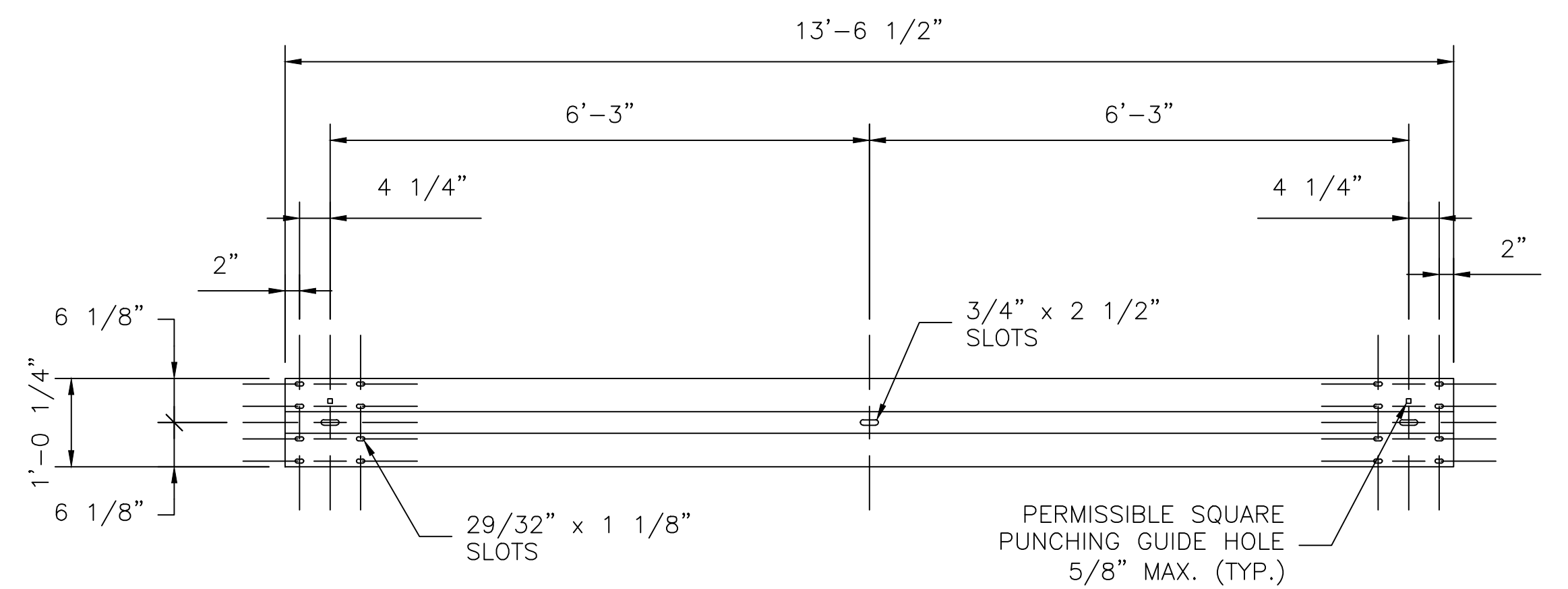


**PLAN OF GUARDRAIL
(APPROACH END)**
SCALE: 1" = 3'-0"

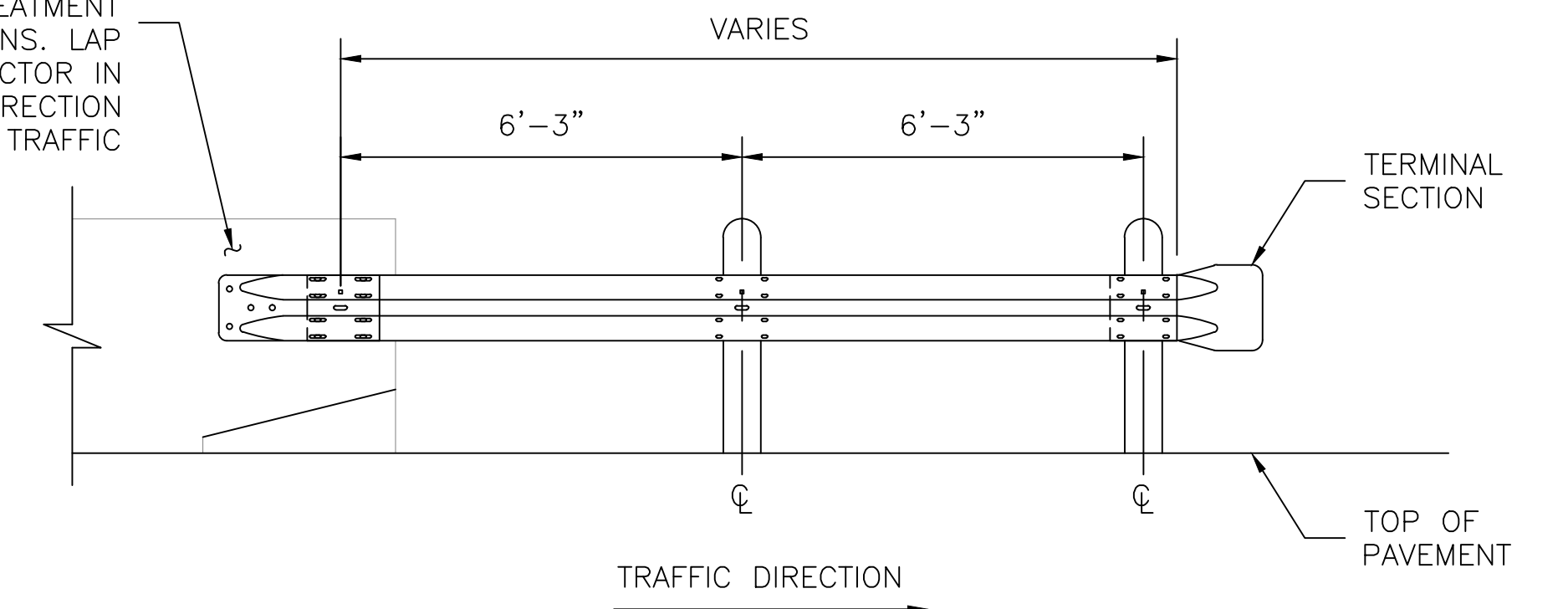


**ELEVATION OF GUARDRAIL
(APPROACH END)**
SCALE: 1" = 3'-0"

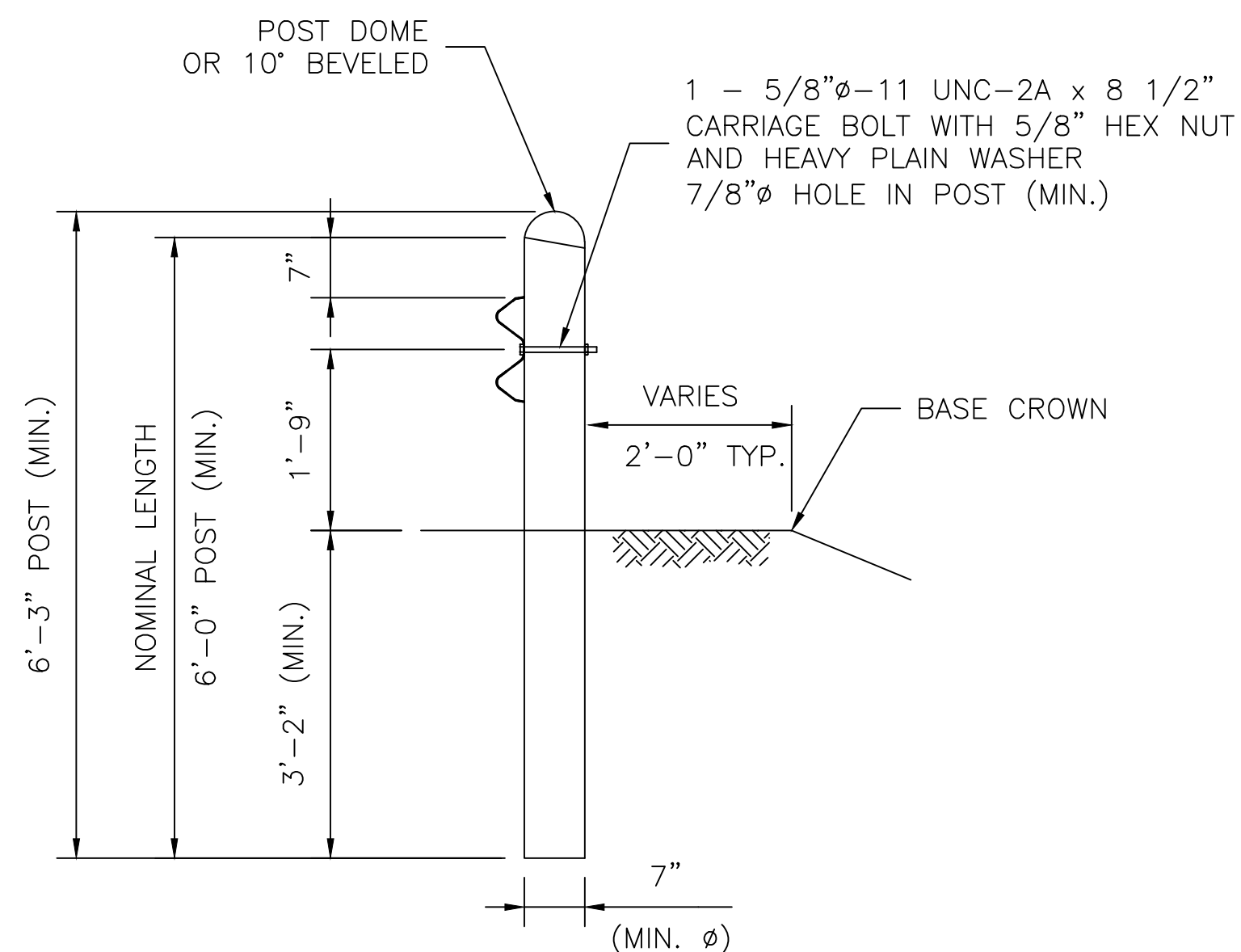


**ELEVATION OF NOMINAL
12'-6" GUARDRAIL**
SCALE: 1" = 1'-6"

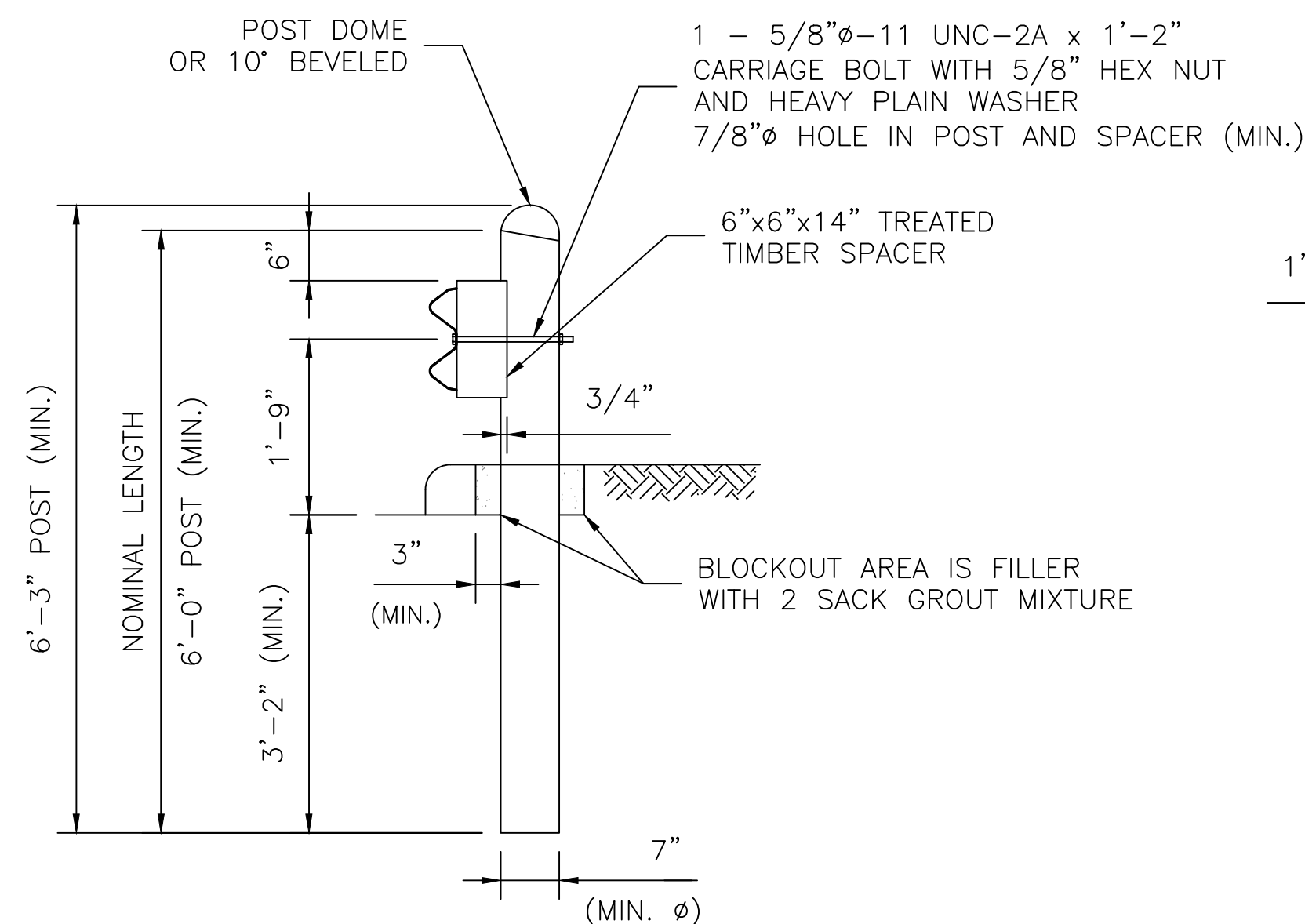
CONNECT TO BRIDGE RAIL,
CONCRETE TRAFFIC BARRIER,
WINGWALL, TERMINAL BARRIER
OR APPROVED END TREATMENT
AS SHOWN IN THE PLANS. LAP
TERMINAL CONNECTOR IN
ACCORDANCE WITH DIRECTION
OF TRAFFIC



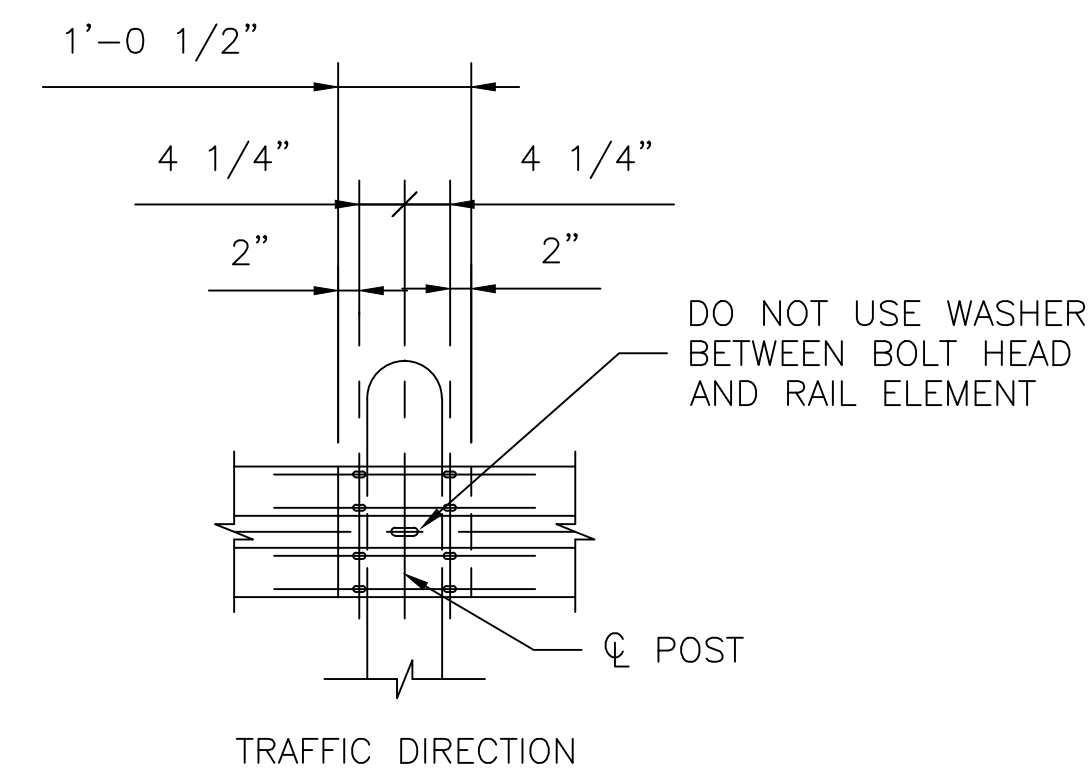
**ELEVATION OF GUARDRAIL
(DEPARTURE END)**
SCALE: 1" = 2'-6"



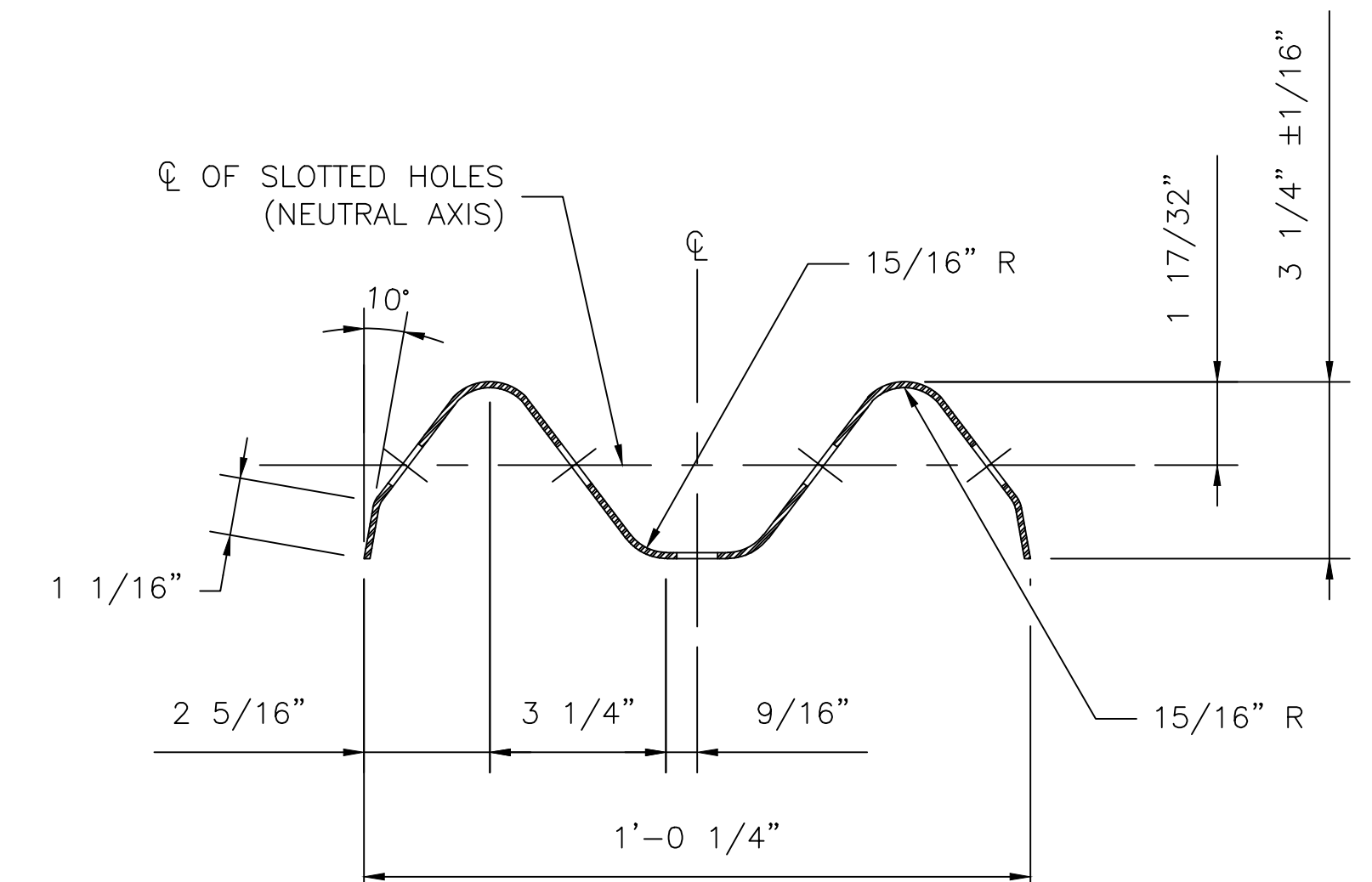
WOOD POST
SCALE: 1" = 1'-6"



**WOOD POST
(BLOCKOUT)
FOR CURBED STREETS**
SCALE: 1" = 1'-6"



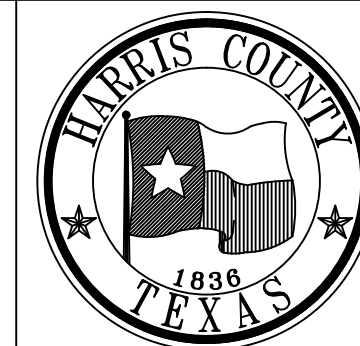
**POST CONNECTION
AND RAIL SPLICE
WOOD POST**
SCALE: 1" = 3'-0"



**SECTION THRU
GUARDRAIL**
SCALE: 1" = 3"

NO.	REVISIONS	DATE	NAME
1	UPDATED DEPARTMENT NAME	2/17/15	RS
△			
△			
△			

HARRIS COUNTY
ENGINEERING DEPARTMENT



CONSULTANT
LOGO/INFORMATION

FOR INTERIM REVIEW ONLY
DOCUMENT INCOMPLETE:
NOT INTENDED FOR CONSTRUCTION,
BIDDING, OR PERMIT PURPOSES
ENGINEER:
P.E. SERIAL No.
DATE:

PROJECT TITLE:		HCED STANDARD
DRAWN BY: JDZ	SHEET DESCRIPTION: FLEXBEAM GUARDRAIL DETAILS	24
CK'D BY: PDG		SHEET NO:
SCALE: AS NOTED	SHEET 1 OF 2	/
DATE: 6/11/13	APPROVED BY:	