

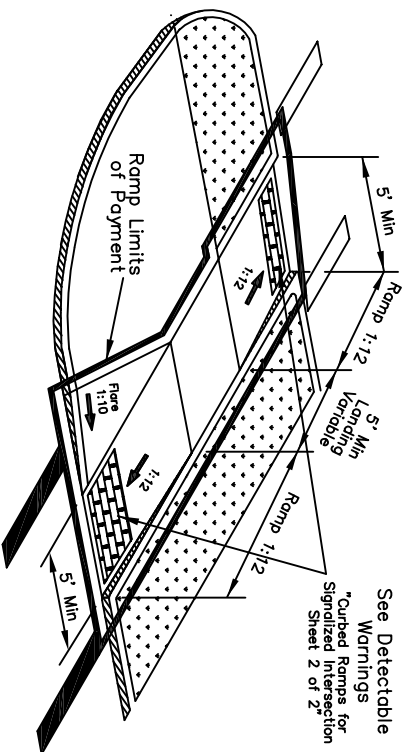
NO.	REVISIONS	DATE	NAME
1	REVISED CURBED RAMPS AT SIGNALIZED INTERSECTIONS. (SHEETS 1 OF 2 AND 2 OF 2)	1/05	BSH

HARRIS COUNTY
PUBLIC INFRASTRUCTURE DEPARTMENT
ARCHITECTURE & ENGINEERING DIVISION

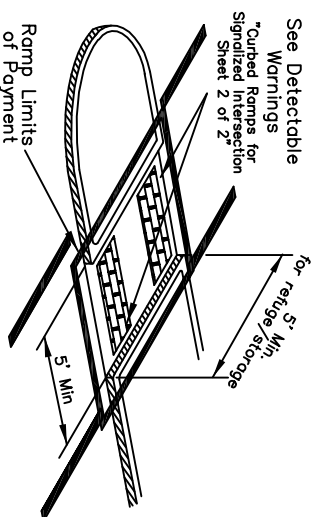


PROJECT TITLE:		JOB NO.:	
DRAWN BY:	SHEET DESCRIPTION:	FILE NAME:	RAMP-DETAILS
BSH	CURBED RAMPS	FILE NO.:	
CK'D BY:	FOR SIGNALIZED INTERSECTIONS	DATE:	1/30/05
NTS	TYPICAL DETAILS SHEET 1 OF 2	APPROVED BY:	
		SHT NO.:	21/22

TYPE 10



TYPE 11

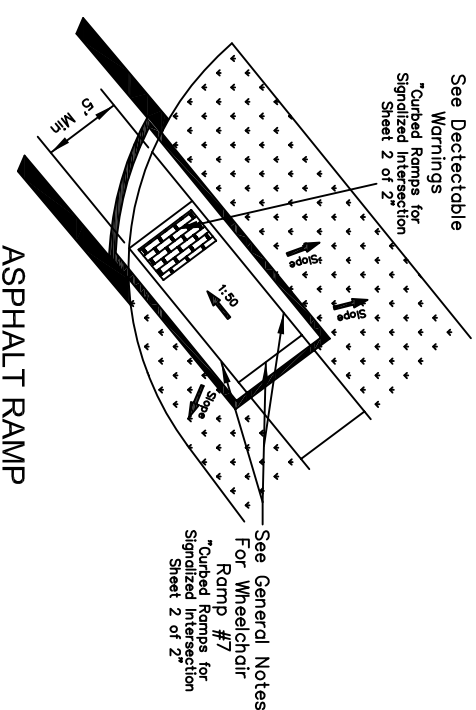


CURB RAMPS AT MEDIAN ISLANDS

GENERAL NOTES:

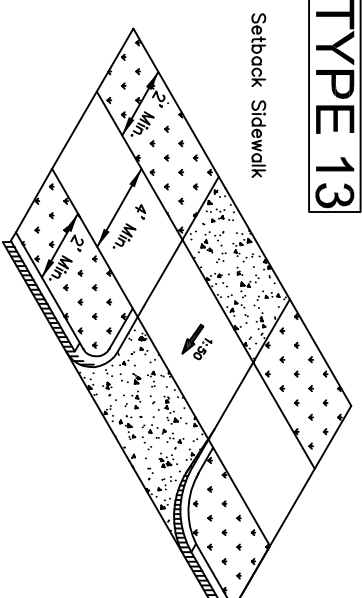
- 1) Diagonal curb ramps with flares shall have a 24" long section of straight curb located on each side of the curb ramp and within the marked crossing.
- 2) All slopes shown are maximum allowable. Flatter slopes that will still drain properly should be used. Ramp length or grade of approach sidewalks may be subjected to adjustment by engineer.
- 3) Landing shall have a minimum depth of 5' and equal width to connecting ramp with a 2% cross slope.
- 4) Maneuvering space at the bottom of curb ramps shall have a minimum of 4' x 4' completely contained within the crosswalk, and completely outside the parallel vehicular travel path.
- 5) Maximum allowable cross slope on sidewalk is 2%.
- 6) Curb ramps with returned curbs may be used only where pedestrians would not normally walk across the ramp. Otherwise, flared sides shall be provided.
- 7) Ramps and landings with drop-offs shall have curb, railings, or projecting surfaces. Curb should be a minimum of 6" in height. Refer to Texas Accessibility Standards (TAS) and the engineer.
- 8) Provide a smooth transition where the curb ramps connect to the roadway.
- 9) Any part of the accessible route with a slope greater than 1:20 (5%) shall be considered a ramp. If a ramp has a rise greater than 6 inches or a horizontal projection greater than 72 inches, then it shall have handrails on both sides.
- 10) Ramps and landings shall transition to existing sidewalk, 5' sidewalk width is preferred but a minimum of 4' width.
- 11) A minimum width of 36" shall be provided around and obstructions located on the pedestrian route.(signs, signals, poles, ect.)
- 12) For construction of detectable warnings see Curbed Ramps For Signalized Intersections Typical Details Sheet 2 of 2.
- 13) For construction of wheelchair ramp and landing all items necessary to install shall be incidental to "limits of payment. saw cut of pavement; removal, excavation, disposal of materials; etc.)
- 14) For "limits of payment" refer to specification "ITEM 530" "Concrete Curb, Gutter, Curb and Gutter, Sidewalks and Driveways.
- 15) For minimum acceptable criteria for signalized intersection refer to the traffic signal design drawings.
- 16) Additional information on curb ramp location, design, visibility may be found in the current edition of the Texas Accessibility Standards (TAS) prepare and administered by the Texas Department of Licensing and Regulation (TDLR).

TYPE 12

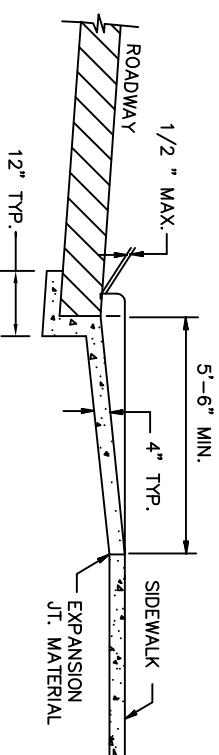


ASPHALT RAMP

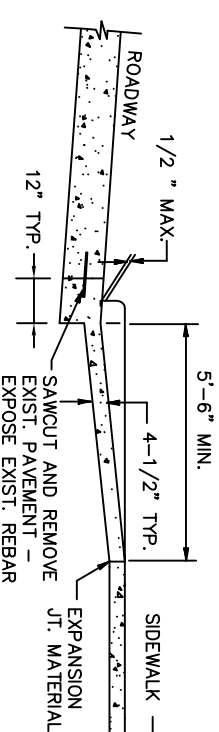
TYPE 13



DRIVEWAY APRONS

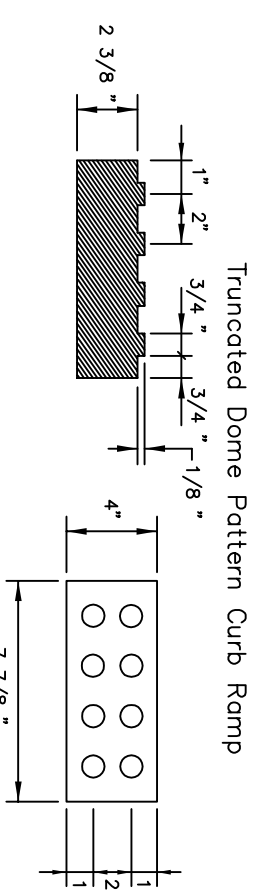


TYPICAL WHEELCHAIR RAMP SECTION ASPHALT PAVEMENT



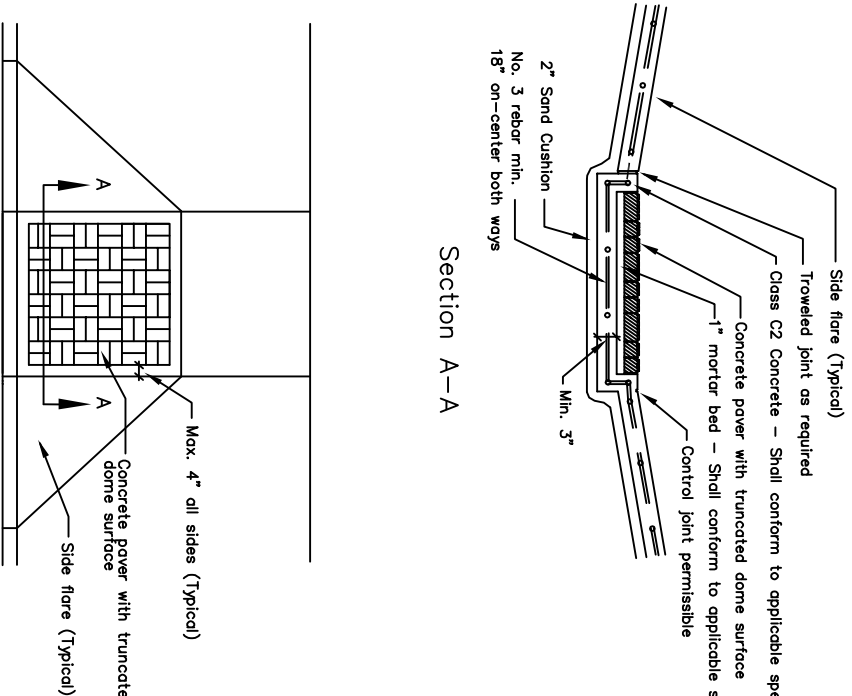
TYPICAL WHEELCHAIR RAMP SECTION PC CONCRETE PAVEMENT

DETECTABLE WARNINGS

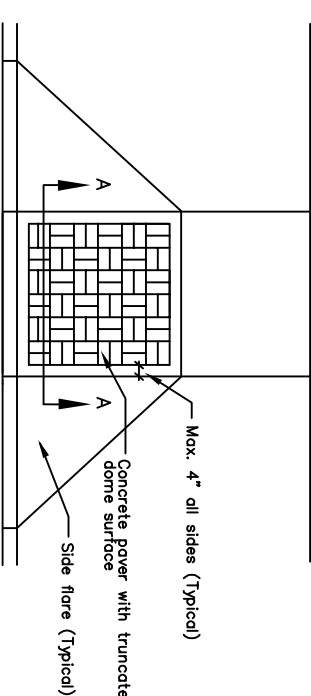


GENERAL NOTES:

- 1) Concrete paver units are the preferred detectable warning, but are not limited to an acceptable alternative detectable warning that comply with TAS, TDLR, and submitted to Harris County for approval at the pre-construction meeting.
- 3) Concrete paver units shall meet all requirements of ASTM C-936, C-33, and shall be laid in a two by two unit basket weave pattern, unless shown in the plans.
- 4) Concrete paver units shall have a truncated dome top surface for detectable warning to pedestrians.
- 5) Concrete paver units shall be saw cut only and any cut unit shall be not less than 25 percent of a full unit.
- 6) Detectable Warning shall be a minimum of 24" in depth (in the direction of pedestrian travel), and extend the full width of the ramp. (Refer to TAS and TDLR)
- 7) All sidewalk and ramp coloring refer to Spec item "531" and "536" "Coloring Concrete for Sidewalks and Wheelchair Ramps", "Coloring Concrete Medians and Sidewalks"



TYPE A



HARRIS COUNTY

PUBLIC INFRASTRUCTURE DEPARTMENT ARCHITECTURE & ENGINEERING DIVISION



NO.	REVISIONS	DATE	NAME
1	REVISED CURBED RAMPS AT SIGNALIZED INTERSECTIONS (SHEETS 1 OF 2 AND 2 OF 2)	1/05	BSH

PROJECT TITLE:	SHEET DESCRIPTION:	DWG NO.:
	CURBED RAMPS	
DRAWN BY:	SCALE:	FILE NAME:
BSH	1/8" = 1'-0"	RAMPS-DETAILS
CHECKED BY:	DATE:	FILE NO.:
	1/30/05	
APPROVED BY:		SHT NO.2/22